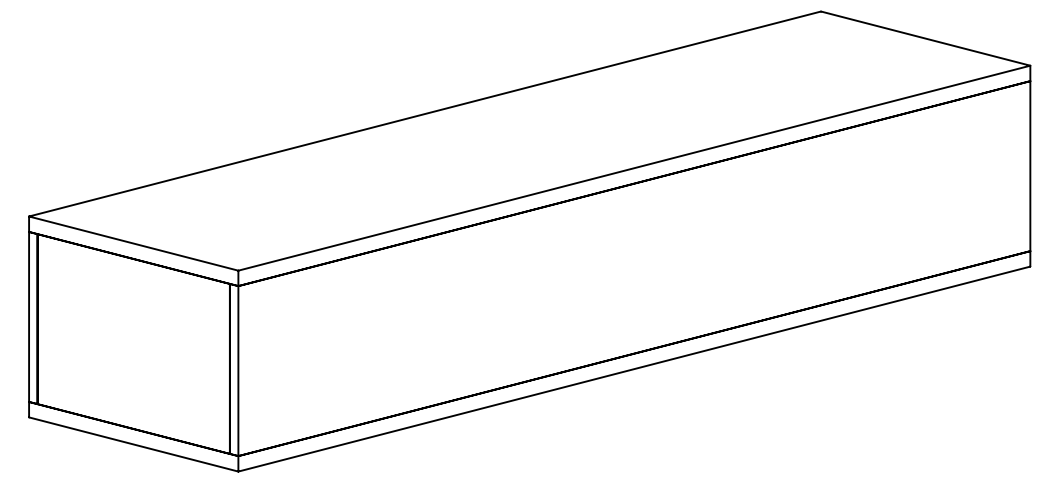
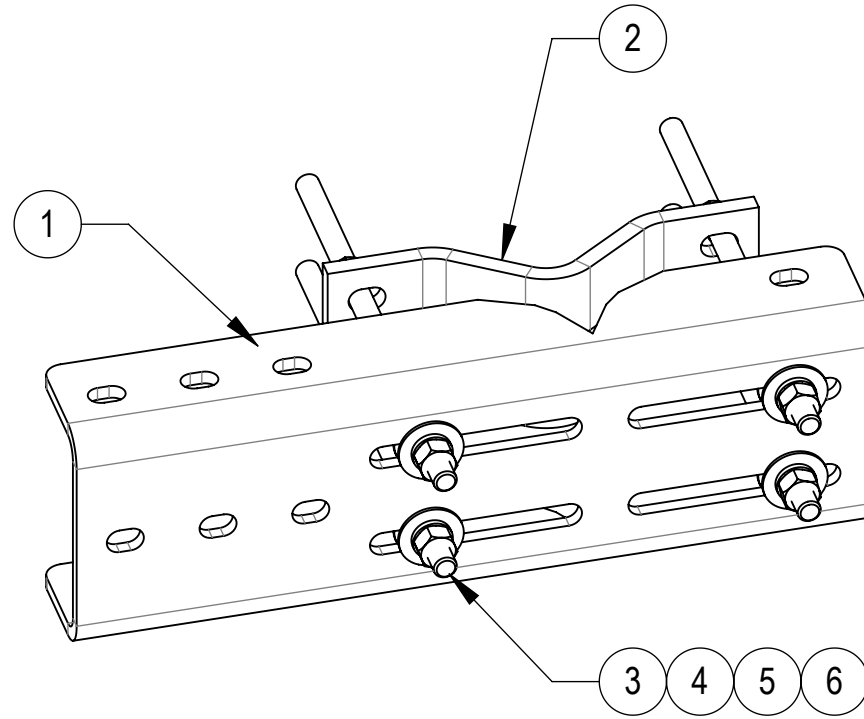
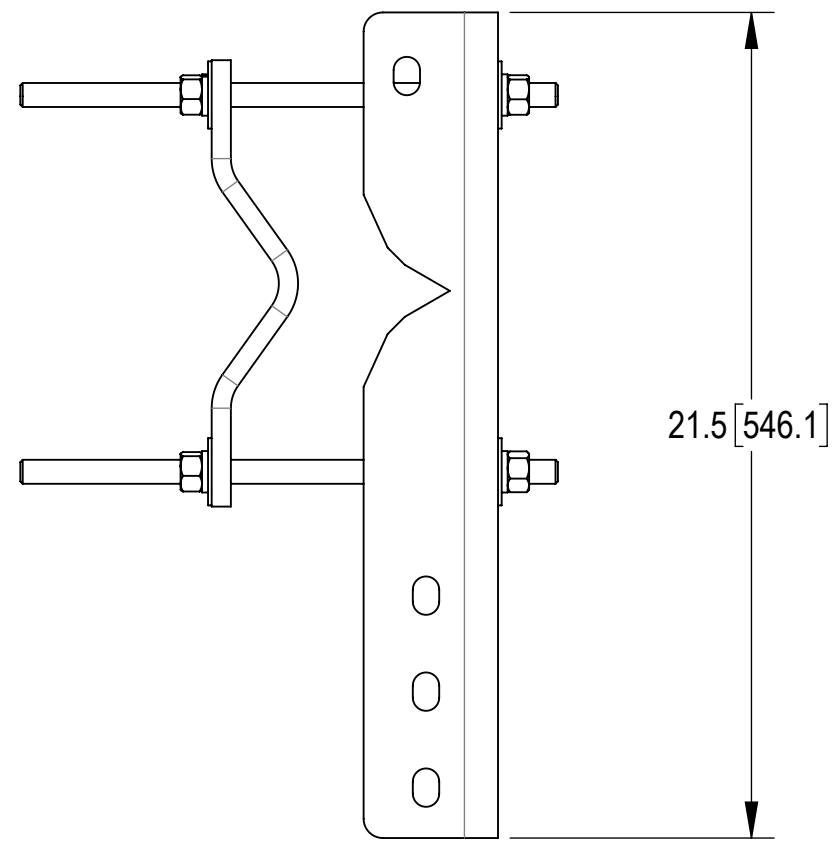
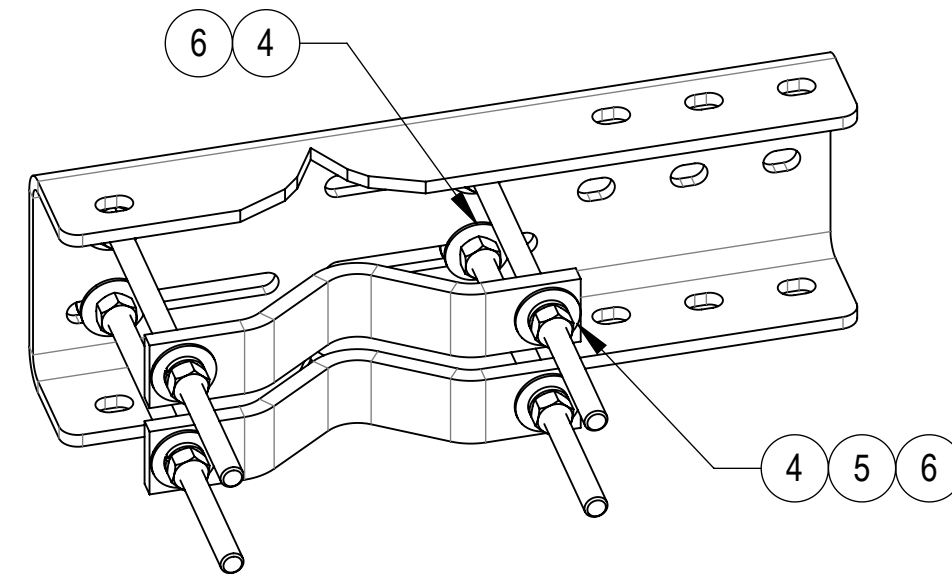
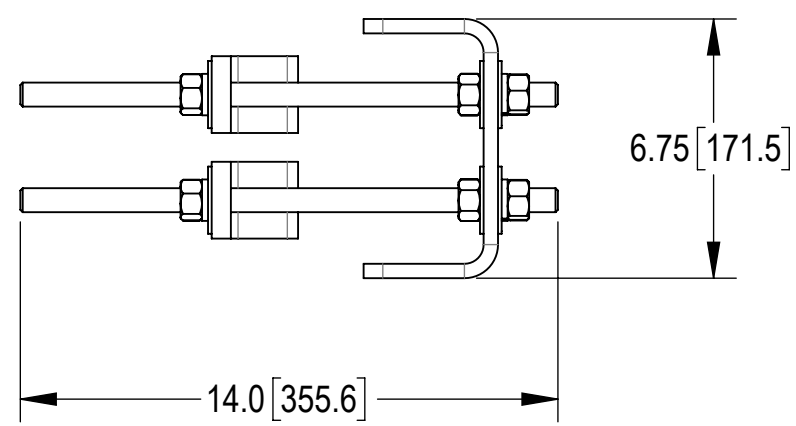


- 1.0 GENERAL NOTES  
 1.1 ALL METRIC DIMENSIONS ARE IN BRACKETS [X.X]  
 1.2 FOR PATENT INFO: <https://www.adwpat.com>  
 2.0 DESIGN NOTES  
 3.0 MANUFACTURING/SPECIAL REQUIREMENTS  
 3.1 TIGHTEN ALL BOLTS SECURING FLAT PLATES BY THE TURN-OF-NUT METHOD. TIGHTEN ALL U-BOLTS USING TURN-OF-NUT METHOD WITH ATTENTION TO LEAVE EQUAL DISTANCE AND EQUAL FORCE ON EACH LEG OF THE U-BOLT.  
 4.0 TEST  
 5.0 PACKAGING  
 5.1 PACKAGING SHALL MEET ANDREW REQUIREMENTS PER DOCUMENT IS-PL-3005  
 5.2 PRINTED DOCUMENT TO BE PLACED INSIDE POLYBAG AND THEN IN SHIPPING CONTAINER  
 5.3 EXTRA HARDWARE MAY BE SUPPLIED, BAGGED AND SHIPPED

REVISIONS			
REV.	DESCRIPTION	DATE	APPROVED
A	INITIAL RELEASE	MSM 20APR10	TP
B	THREADED ROD WAS MT-381	MSM 13SEP12	TP
C	ADD PACKAGING, CHG BOM	CEB 26APR16	8000013755
D	UPDATED DRAWING FORMAT; REDRAWIN	YC1059 20OCT25	BA1025 50105444AMO



PACKAGING VIEW




COMPONENT PART NUMBERS PROVIDED FOR ASSEMBLY PURPOSES;  
 INDIVIDUAL COMPONENTS MAY BE SHIPPED AS PARTS WITHIN AN INCLUDED KIT.


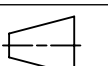
ITEM	PART NO.	DESCRIPTION	QTY.	WEIGHT	NOTE NO.
1	MDCS01	UNIVERSAL LEG CHANNEL FOR MD-CS	1	25.05 LBS	
2	MCP10	CLAMP HALF 1/2" 5/8" H/W 2.5-9 PIPE	2	3.40 LBS	
3	MT-382-14	5/8" X 14" GALV THREADED ROD	4	1.21 LBS	
4	GWLF-05	5/8" GALV FLAT WASHER, 1.7OD	12	0.06 LBS	
5	GWL-05	5/8" GALV LOCK WASHER	8	0.03 LBS	
6	GN-05	5/8" GALV HEX NUT	12	0.08 LBS	

DENSITY	38.56	lbs/in <sup>3</sup>
MASS	38.56	lbs
VOLUME	136.83	in <sup>3</sup>
SURFACE AREA	892.56	in <sup>2</sup>
HEIGHT	14.0"	
LENGTH	21.5"	
WIDTH	6.8"	

Confidential



**ANDREW**® an Amphenol company

TOLERANCES		SAP MATERIAL MASTER	
0 PLACE X[X] ± 0.25[6.3]	2 PLACE .XX[X] ± 0.06[1.5]	<b>MD-CS-B</b>	
1 PLACE .X[X] ± 0.12[3.0]	ANGLES ± 2°		
FINISH		MATERIAL	
<small>UNLESS OTHERWISE SPECIFIED DIMENSIONS ARE IN INCHES INTERPRET PER ANSI Y 14.5M-1994</small>		NAME	DATE
		CE MSM	20APR10
		RW YC1059	10/22/2025
		AD YMENG	10/27/2025
TITLE		<b>MICROWAVE DISCH CHANNEL SUPPORT, 6' RND</b>	
RE YMENG	10/28/2025		
ECN 50105444AMO		SCALE	DOCUMENT NO.
		<b>1:5</b>	<b>MD-CS-B</b>
SIZE	Auth Group INSL	MODEL	
<b>C</b>	 	VERSION	STATUS
		01	RE
		DRAWING	
VERSION	STATUS	REVISION	REVISION
01	RE	D	01
		SHEET	
		1 OF 1	