

4

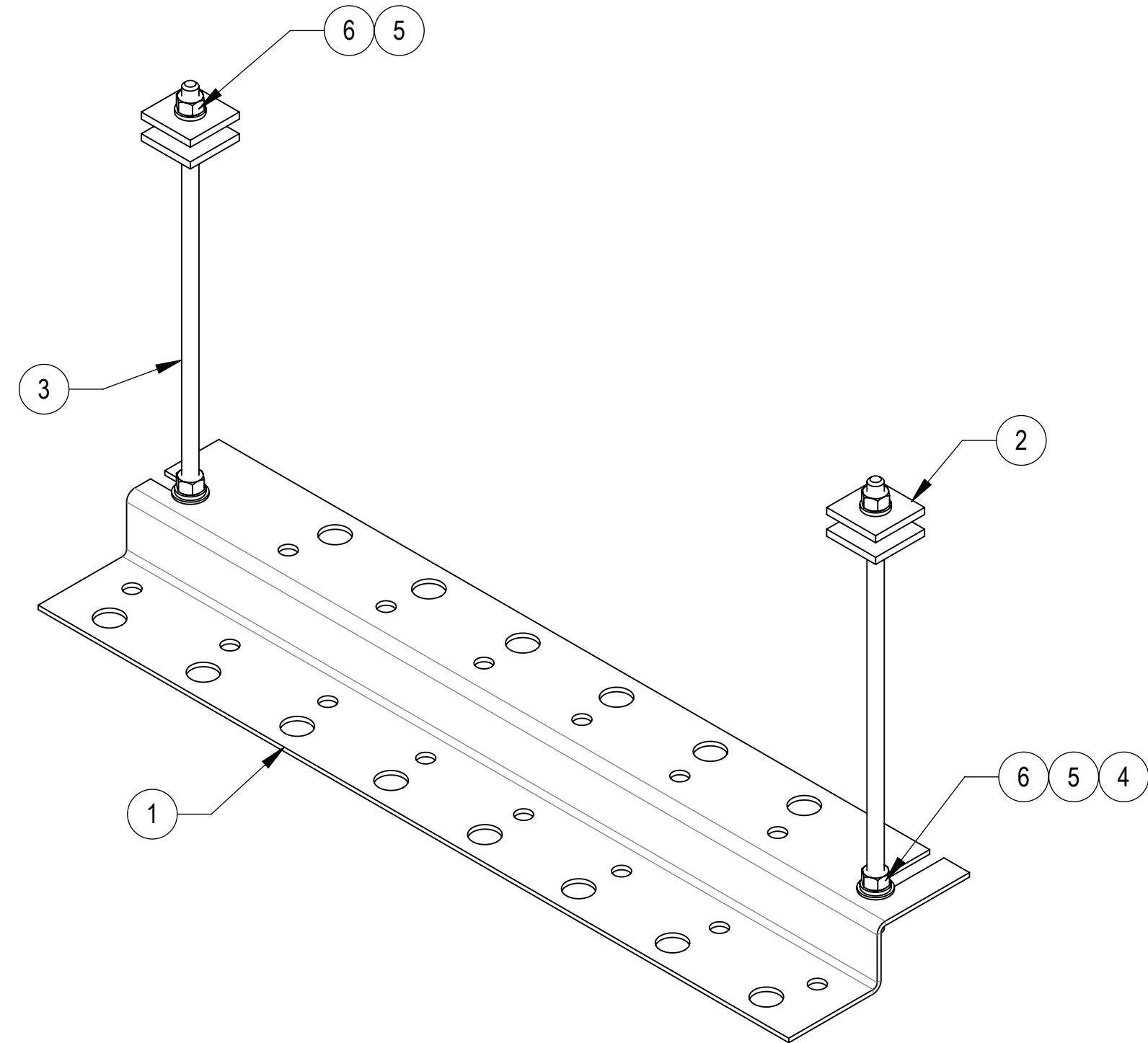
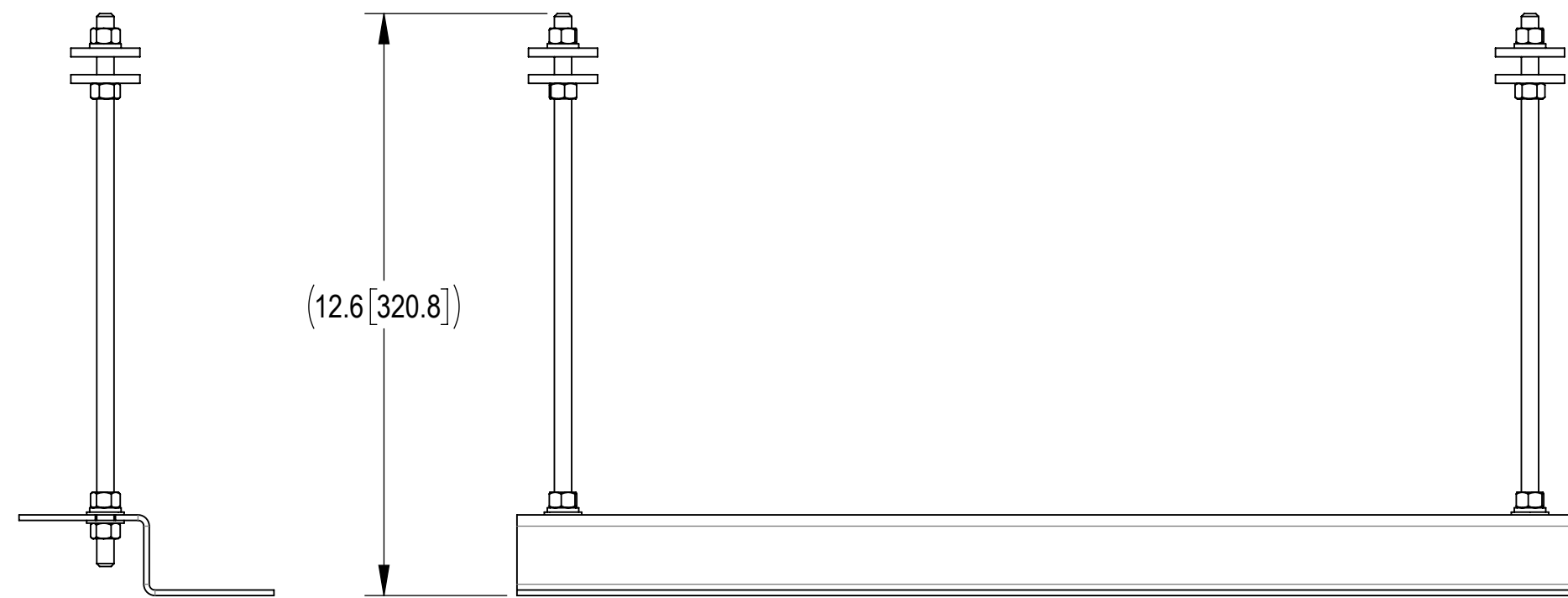
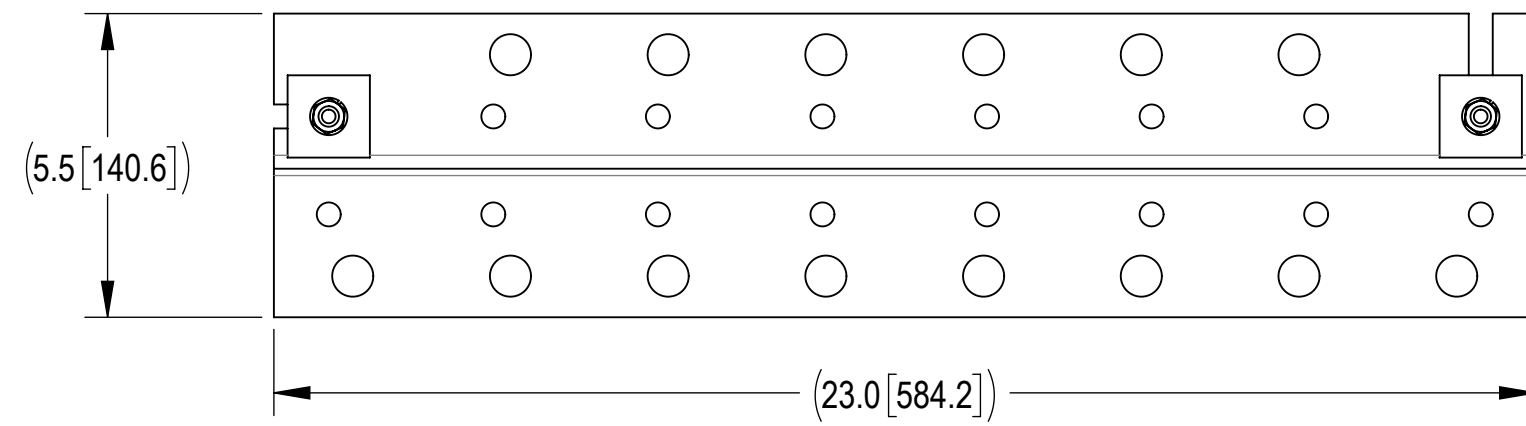
3

2

1

- 1.0 GENERAL NOTES
 - 1.1 ALL METRIC DIMENSIONS ARE IN BRACKETS [X. X]
 - 1.2 FOR PATENT INFO: <https://www.adwpat.com>
- 2.0 DESIGN NOTES
- 3.0 MANUFACTURING/SPECIAL REQUIREMENTS
 - 3.1 TIGHTEN ALL BOLTS SECURING FLAT PLATES BY THE TURN-OF-NUT METHOD.
- 4.0 TEST
- 5.0 PACKAGING
 - 5.1 PACKAGING SHALL MEET ANDREW REQUIREMENTS PER DOCUMENT IS-PL-3005
 - 5.2 PRINTED DOCUMENT TO BE PLACED INSIDE POLYBAG AND THEN IN SHIPPING CONTAINER
 - 5.3 EXTRA HARDWARE MAY BE SUPPLIED, BAGGED AND SHIPPED

REVISIONS			
REV.	DESCRIPTION	DATE	APPROVED
A	INITIAL RELEASE	DI 27JAN05	TP
B	UPDATED BOM AND VIEW	AW 02NOV05	TP
C	UPDATED DRAWING FORMAT TO NEW	LL1090 05NOV25	BA1025 50105694AMO




COMPONENT PART NUMBERS PROVIDED FOR ASSEMBLY PURPOSES;
INDIVIDUAL COMPONENTS MAY BE SHIPPED AS PARTS WITHIN AN INCLUDED KIT.



ITEM	PART NO.	DESCRIPTION	QTY.	WEIGHT	NOTE NO.
1	ZB-H8	HORIZONTAL Z-BRACKET, 14 RUNS OF COAX	1	5.11 LBS	
2	MT-387	SQUARE WASHER 1-1/2"X1-1/2" W/ 7/16 HOLE	4	0.11 LBS	
3	MT-373	3/8" X 12" SS THREADED ROD	2	0.37 LBS	
4	SWF-03	3/8" SS FLAT WASHER	4	0.01 LBS	
5	SWL-03	3/8" SS LOCK WASHER	4	0.01 LBS	
6	SN-03	3/8" SS HEX NUT	8	0.02 LBS	

DENSITY		lbs/in ³
MASS	6.49	lbs
VOLUME	23.05	in ³
SURFACE AREA	386.06	in ²
HEIGHT	12.6"	
LENGTH	23.0"	
WIDTH	5.5"	

Confidential



ANDREW® an Amphenol company

TOLERANCES		SAP MATERIAL MASTER	
1 PLACE .X[X] ± 0.2[6.3]	3 PLACE .XXX[X] ± 0.06[1.5]	MT-357-24	
2 PLACE .XX[X] ± 0.12[3.0]	ANGLES ± 2°		
FINISH		MATERIAL	
UNLESS OTHERWISE SPECIFIED DIMENSIONS ARE IN INCHES INTERPRET PER ANSI Y 14.5M-1994		NAME	DATE
		CE DI	27JAN05
		RW LL1090	11/05/2025
		AD YMENG	11/10/2025
ECN 50105694AMO		RE YMENG	11/10/2025
		TITLE	
SCALE 1:2		TRAPEZE KIT, 24IN WIDE, 1 RUNG	
		MT-357-24	
SIZE	Auth Group	INSL	MODEL
C			VERSION
			STATUS
			REVISION
			VERSION
			STATUS
			REVISION
			DRAWING
			VERSION
			STATUS
			REVISION
			SHEET
			1 OF 1

4

3

2

1