

4

3

2

1

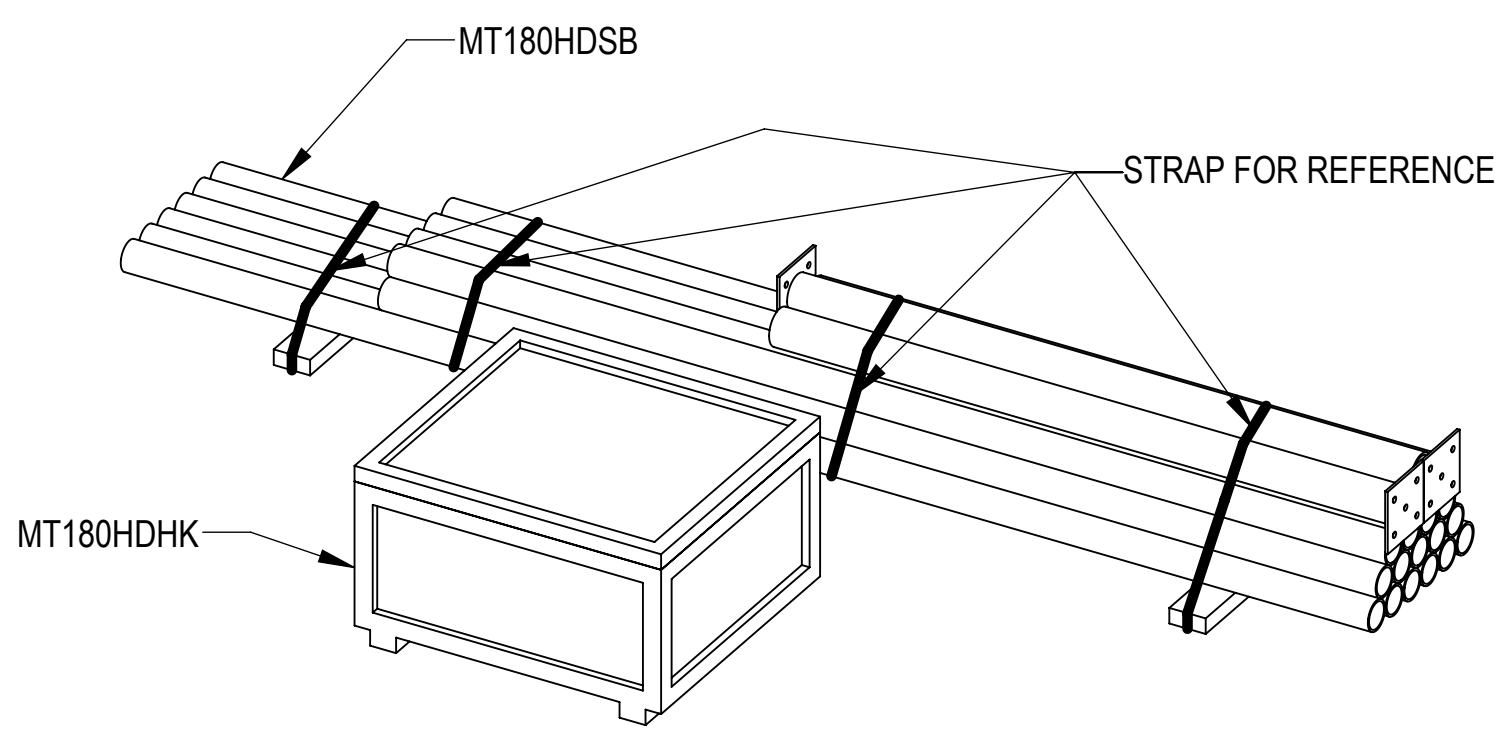
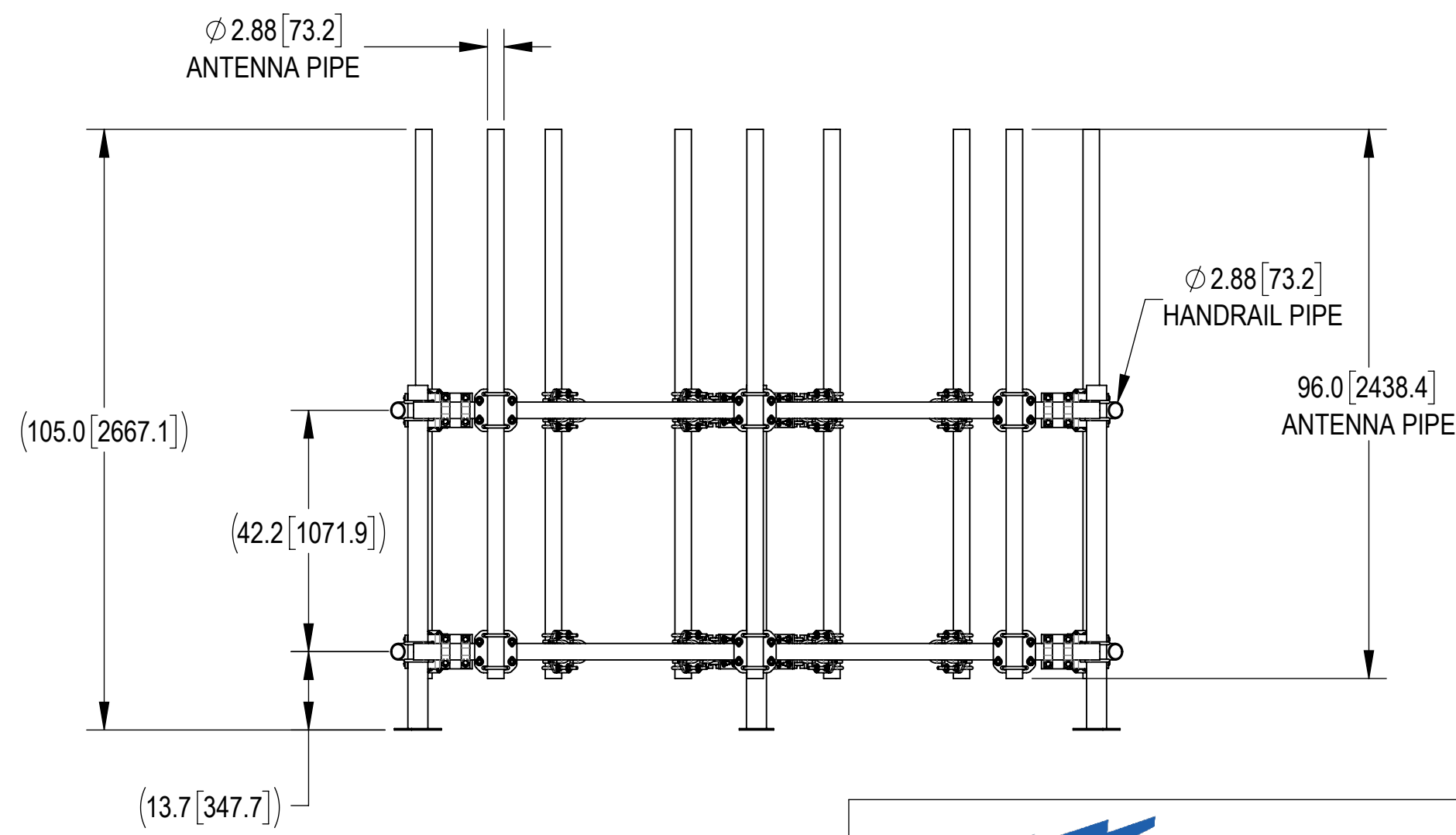
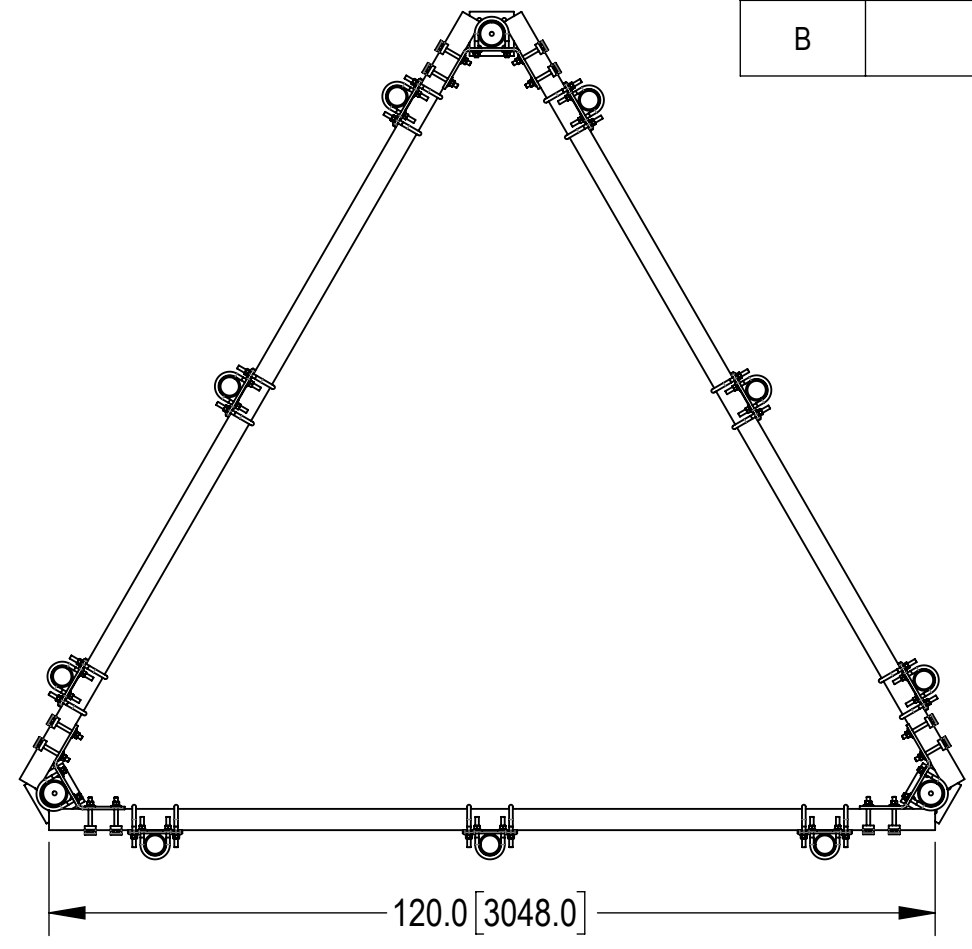
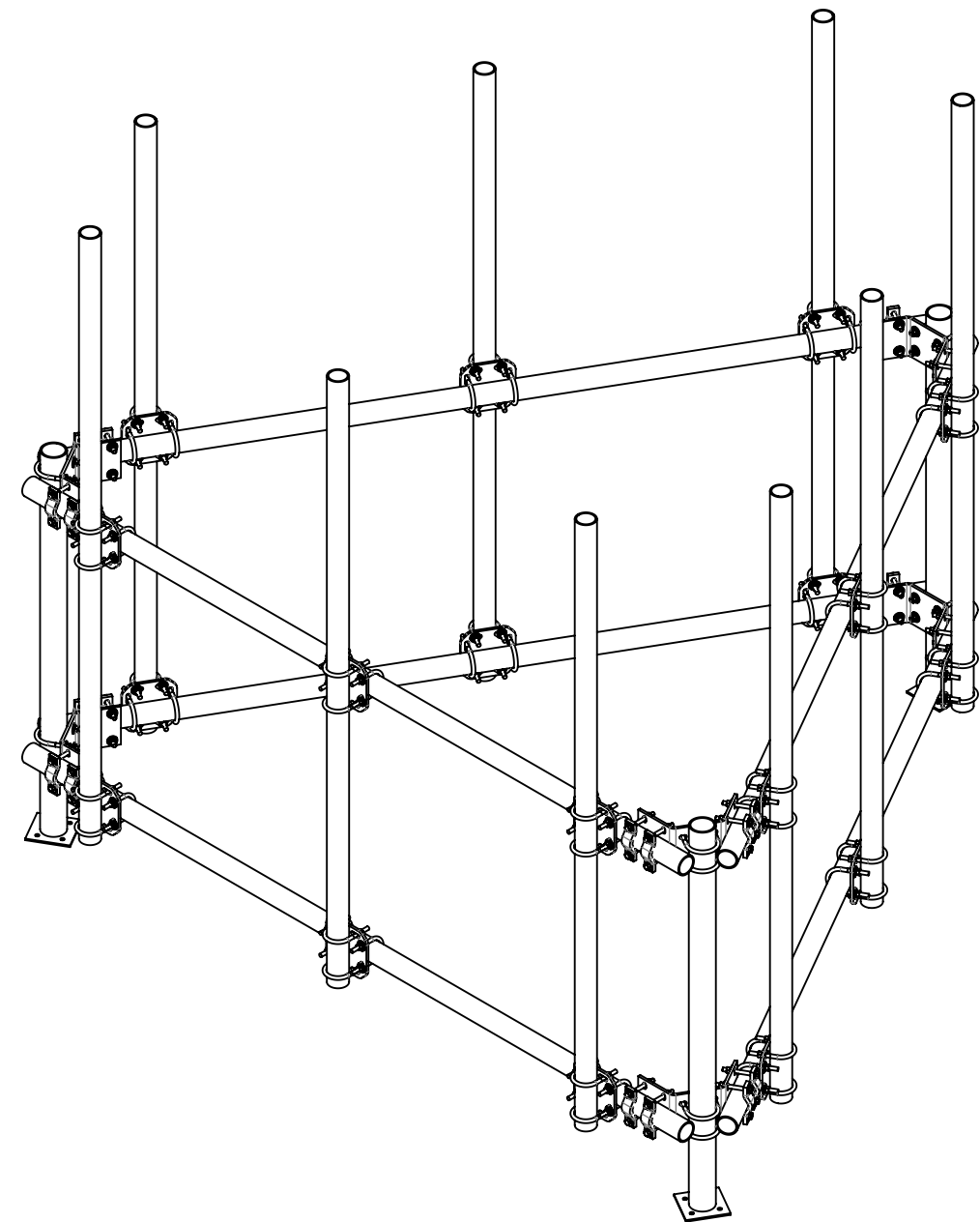
- 1.0 GENERAL NOTES
  - 1.1 ALL METRIC DIMENSIONS ARE IN BRACKETS [X. X]
  - 1.2 FOR PATENT INFO: <https://www.adwpat.com>

- 2.0 DESIGN NOTES
  - 2.1 ANY HAZARDS OR OBSTRUCTIONS TO THE CLIMBING FACILITY AND SAFETY CLIMB MUST BE IDENTIFIED PRIOR TO INSTALLING THE APPURTENANCE. ADDITIONAL PRODUCTS MAY BE REQUIRED TO MAINTAIN THE INTEGRITY OF THE SAFETY CLIMB. DURING INSTALLATION, TEMPORARY AND/OR PERMANENT PRECAUTIONARY MEASURES SHOULD BE TAKEN TO PRESERVE THE CLIMBING FACILITY AND/OR SAFETY CLIMB.

- 3.0 MANUFACTURING/SPECIAL REQUIREMENTS
  - 3.1 TIGHTEN ALL BOLTS SECURING FLAT PLATES BY THE TURN-OF-NUT METHOD. TIGHTEN ALL U-BOLTS USING TURN-OF-NUT METHOD WITH ATTENTION TO LEAVE EQUAL DISTANCE AND EQUAL FORCE ON EACH LEG OF THE U-BOLT.

- 4.0 TEST
- 5.0 PACKAGING
  - 5.1 PACKAGING SHALL MEET ANDREW REQUIREMENTS PER DOCUMENT IS-PL-3005
  - 5.2 PRINTED DOCUMENT TO BE PLACED INSIDE POLYBAG AND THEN IN SHIPPING CONTAINER
  - 5.3 EXTRA HARDWARE MAY BE SUPPLIED, BAGGED AND SHIPPED

REVISIONS			
REV.	DESCRIPTION	DATE	APPROVED
A	INITIAL RELEASE	XZ1054 09NOV21	BA1025 40138952CMO
B	UPDATED DRAWING FORMAT TO NEW	LL1090 28OCT25	BA1025 50105519AMO



DENSITY		lbs/in <sup>3</sup>
MASS	1157.53	lbs
VOLUME	4081.91	in <sup>3</sup>
SURFACE AREA	38589.51	in <sup>2</sup>
HEIGHT	105.0'	
LENGTH	128.1"	
WIDTH	114.9"	

Confidential

**ANDREW**® an Amphenol company

TOLERANCES: 1 PLACE .X[X] ± 0.06[1.5], 2 PLACE .XX[X] ± 0.03[0.8], 3 PLACE .XXX[X] ± 0.010[0.3], ANGLES ± 2°

SAP MATERIAL MASTER: **MT-180-HD**

NAME	DATE	TITLE
CE XZ1054	09NOV21	TRI SECTOR RT FRAME 10' FACE W/9 96" AP
RW LL1090	10/29/2025	
AD YMENG	10/30/2025	SCALE: <b>1:24</b> DOCUMENT NO.: <b>MT-180-HD</b>
RE YMENG	10/30/2025	
ECN 50105519AMO		

SIZE	Auth Group	INSL	MODEL	DRAWING			SHEET
<b>C</b>			VERSION	STATUS	REVISION	VERSION	STATUS
			02	RE	<b>C</b>	01	RE
							<b>B</b>

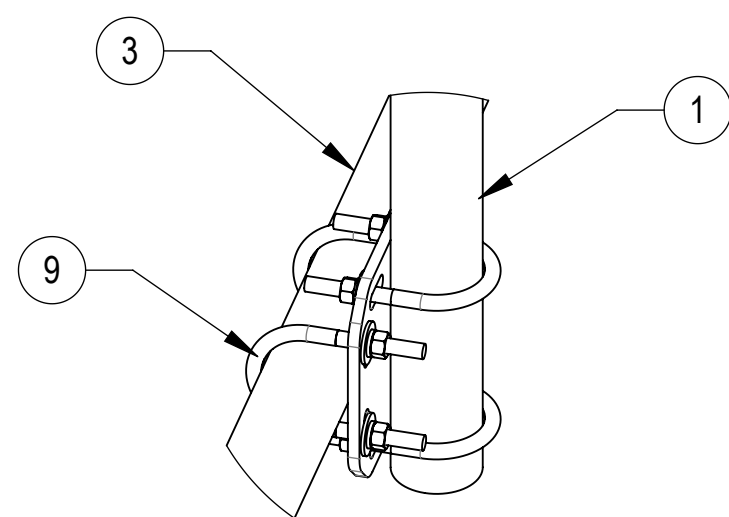
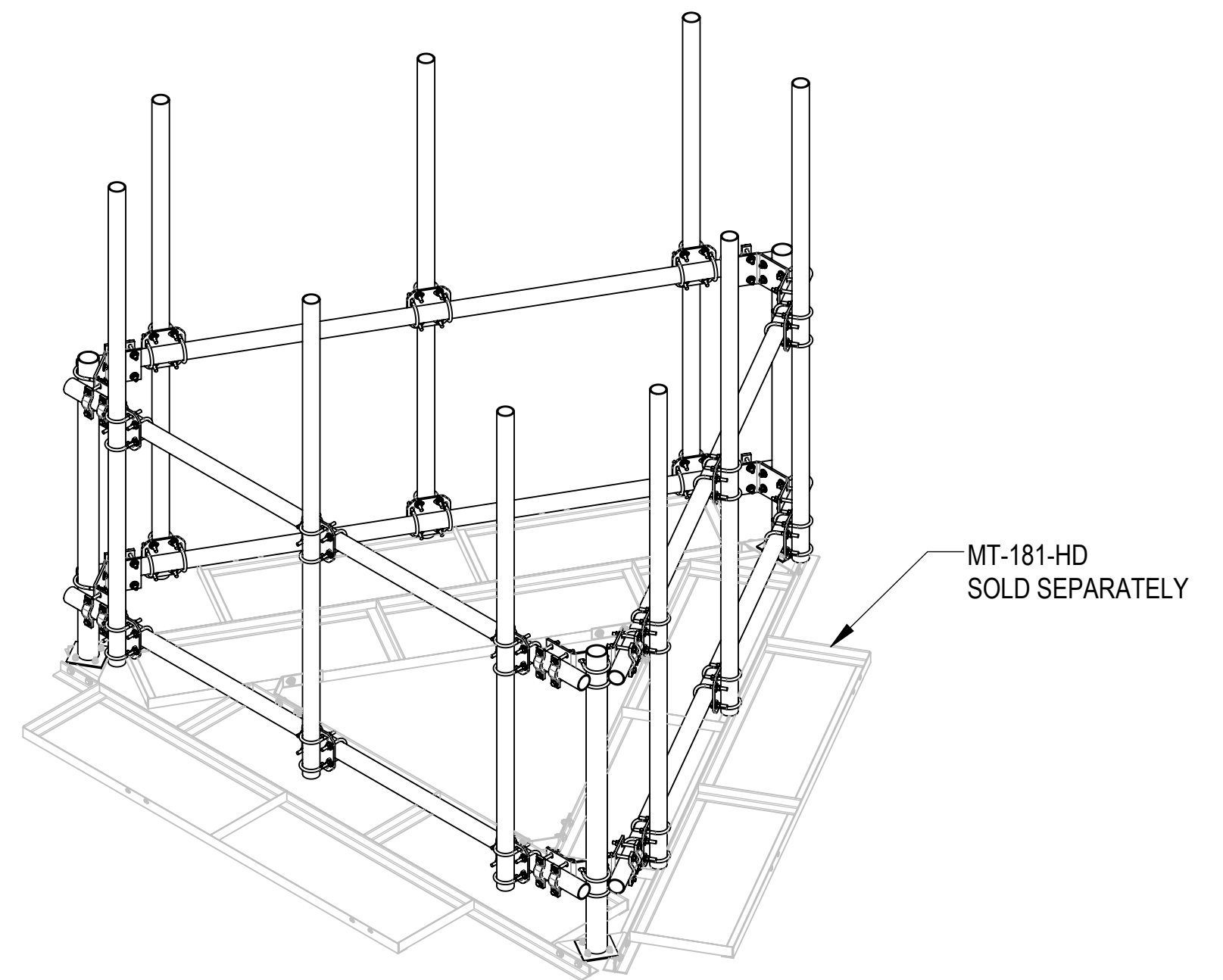
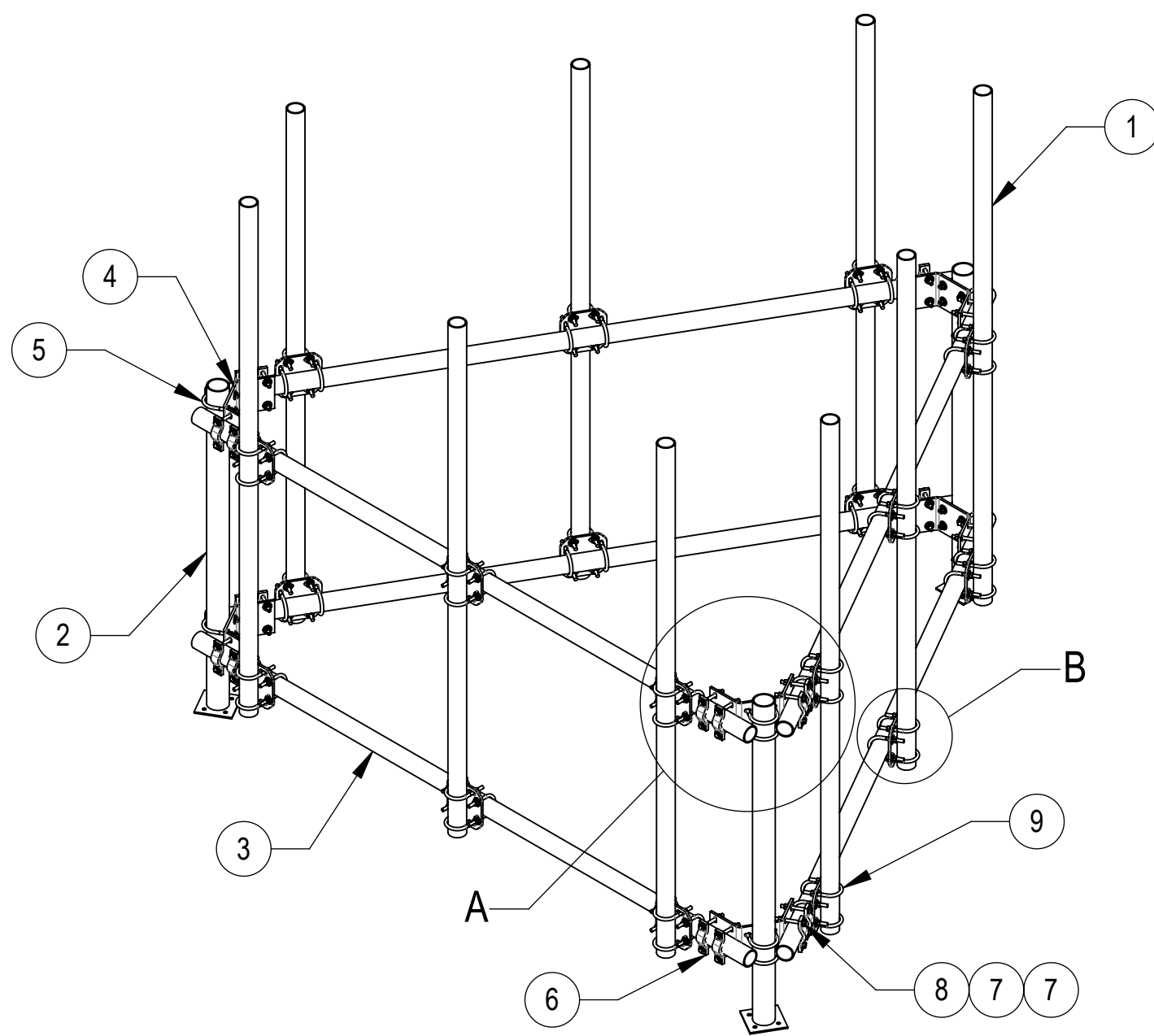
1 OF 2

4

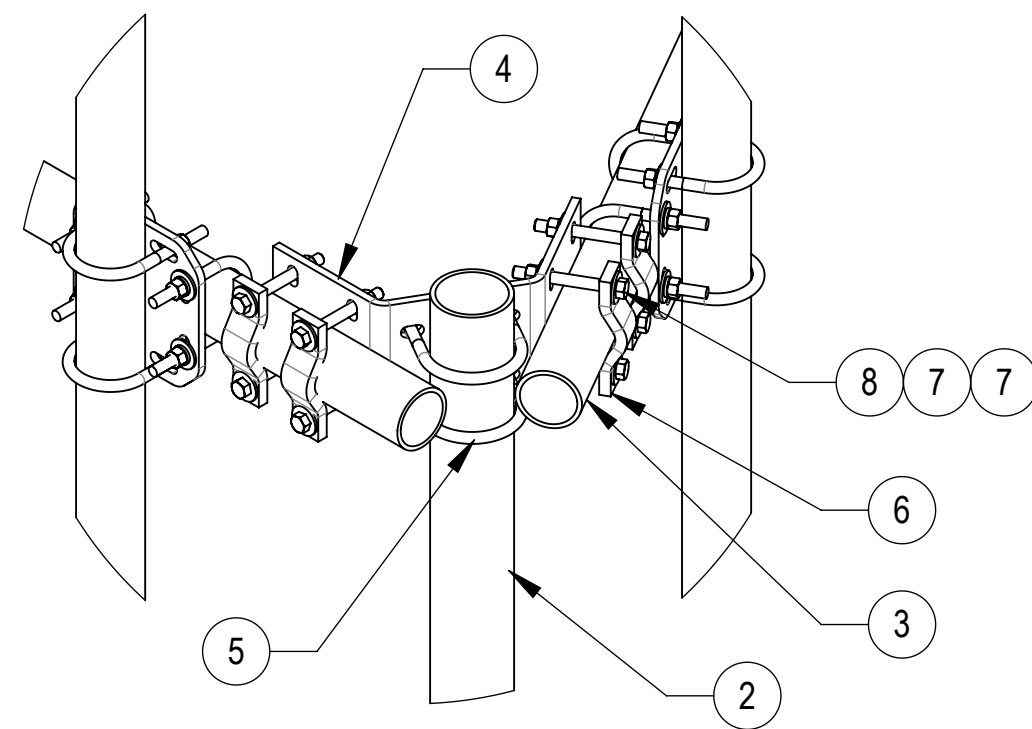
3

2

1



**DETAIL B**  
SCALE 1 : 6




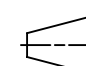
**DETAIL A**  
SCALE 1 : 8

COMPONENT PART NUMBERS PROVIDED FOR ASSEMBLY PURPOSES;  
INDIVIDUAL COMPONENTS MAY BE SHIPPED AS PARTS WITHIN AN INCLUDED KIT.

ITEM	PART NO.	DESCRIPTION	QTY.	WEIGHT	NOTE NO.
1	MT54696	PIPE, 2.875"OD X 96"	9	45.96 LBS	
2	MT18001	CORNER UPRIGHT (WELDMENT)	3	40.07 LBS	
3	MT546120	PIPE, 2.875"OD X 120"	6	57.45 LBS	
4	MT180HD-1000	MT180HD-1000	6	11.36 LBS	
5	GUB-4355	1/2" X 3-5/8" X 5" GALV U-BOLT	12	0.71 LBS	
6	SCP10	CLAMP HALF: 1/2", 9/16" HOLE, 4-1/8" (EA)	24	1.20 LBS	
7	GWF-04	1/2" GALV FLAT WASHER	96	0.04 LBS	
8	GB-0444A	1/2" X 4-1/2" GALV BOLT KIT (A325)	48	0.30 LBS	
9	XP-2525	CROSSOVER PLATE KIT, 2-7/8 OD X 2-7/8 OD	18	8.37 LBS	

**ANDREW** an Amphenol company

TITLE  
TRI SECTOR RT FRAME 10' FACE W/9 96" AP

SIZE <b>C</b>	SCALE <b>1:24</b>	DOCUMENT NO. MT-180-HD		
 		DRAWING		SHEET 2 OF 2
		VERSION 01	STATUS RE	

Confidential